



STATISTICS RESEARCH

FIRST PRESENTATION

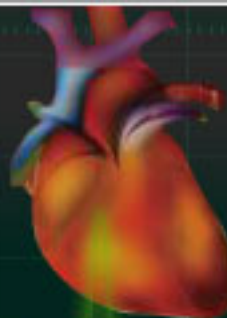
EVARISTO RODRIGUEZ

DIMACS REU 2018

The image features a blue gradient background with white circuit-like lines in the corners. These lines consist of straight paths that branch out and terminate in small circles, resembling a network or data flow diagram.

WHERE WILL I BE WORKING THIS SUMMER?

The Cardiovascular Institute of New Jersey



The background is a gradient of blue, transitioning from a lighter shade at the top to a darker shade at the bottom. In the four corners, there are decorative white line-art elements that resemble circuit traces or neural pathways, with small circles at the end of the lines.

WHAT WILL I BE DOING IN THE CARDIOVASCULAR
INSTITUTE?

The background is a dark blue gradient. In the four corners, there are white line-art graphics resembling circuit boards or neural networks, with lines connecting to small circles.

WHAT IS R, RSTUDIO AND SHINY?



Studio[®]



ACKNOWLEDGMENTS:

- This presentation would not have been possible if not for the support from the MAA/NREUP program, through the NSF grant DMS-1652506.